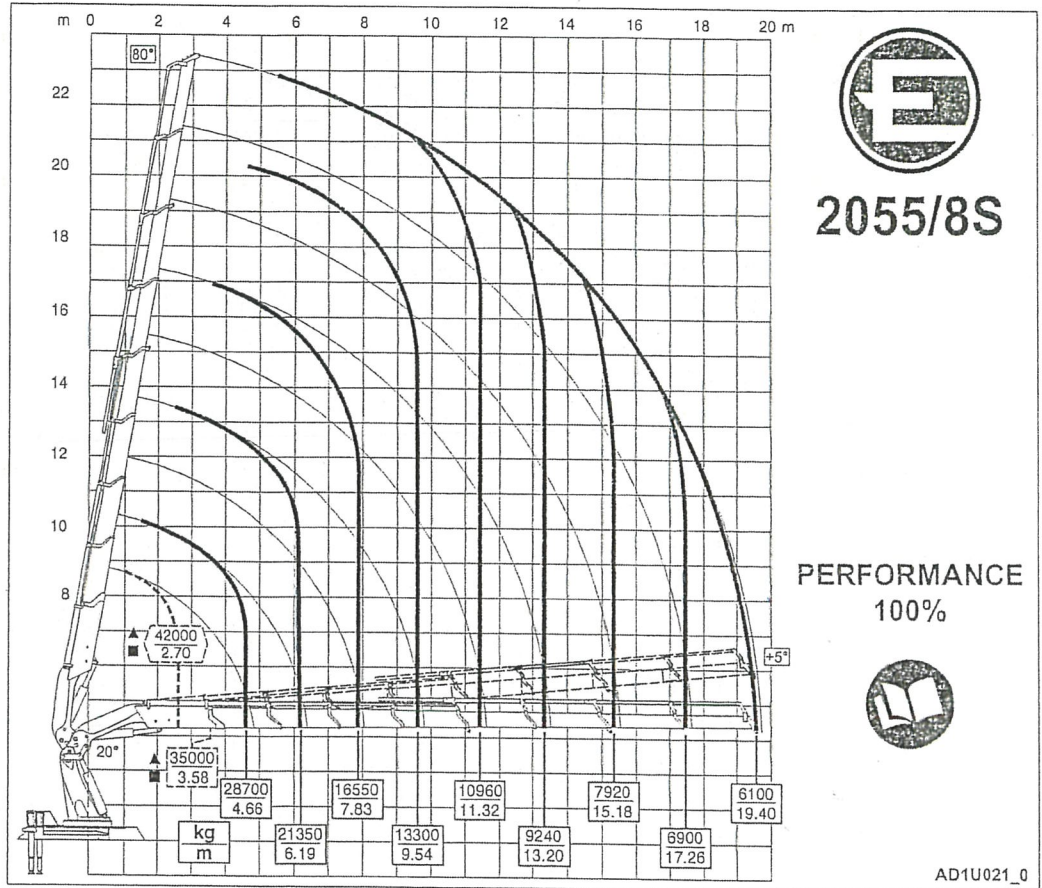




DATI TECNICI - TECHNICAL SPECIFICATION

Diagrammi di carico
Load diagrams

2055

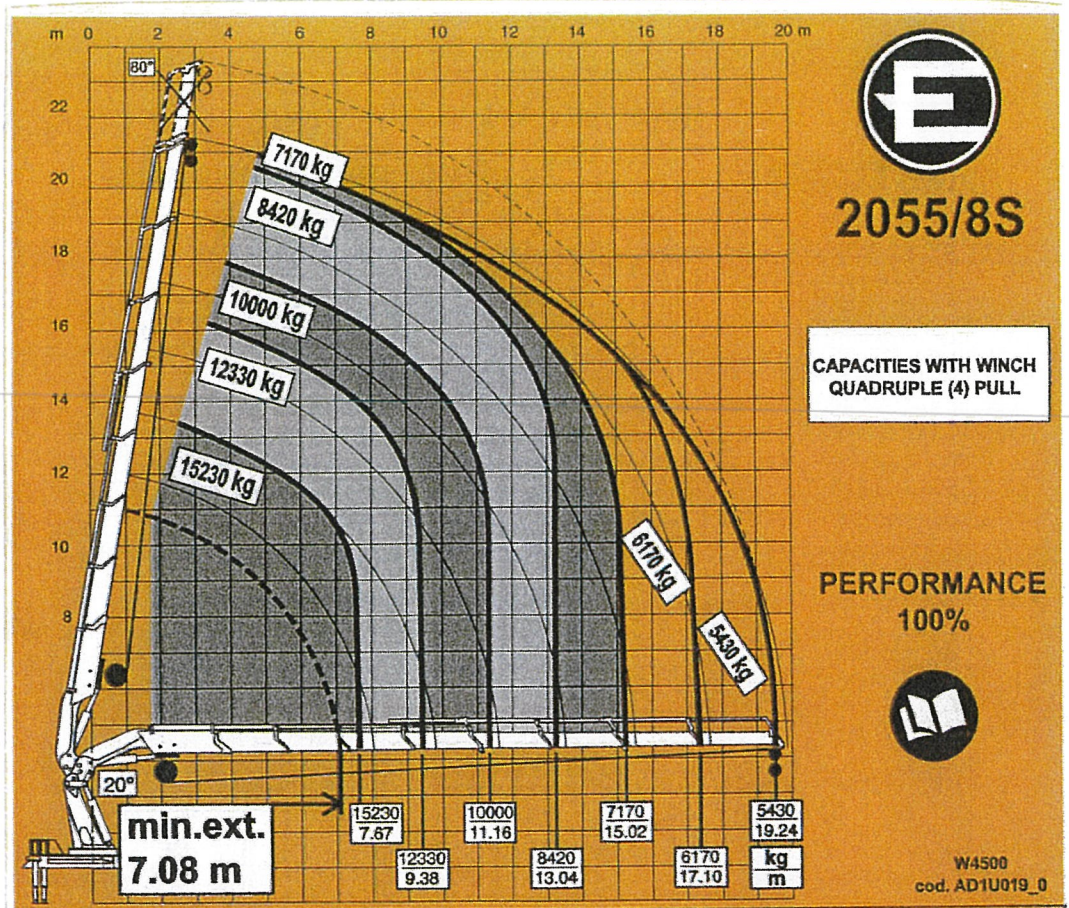


2055/8S

PERFORMANCE
100%



AD1U021_0



ATTENZIONE

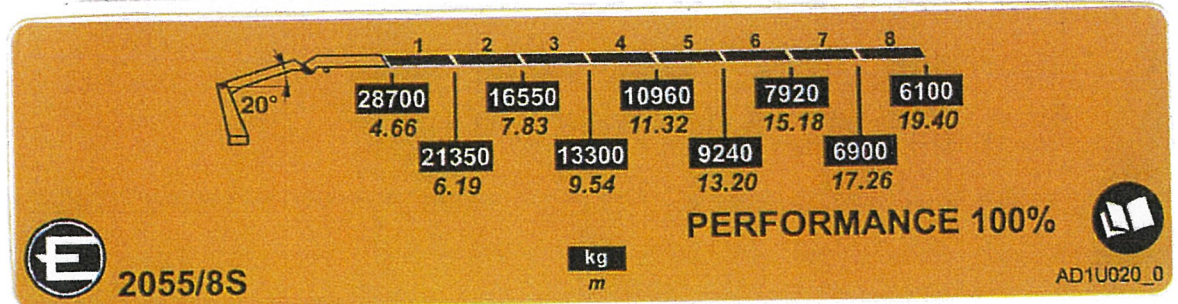
CONDIZIONI OPERATIVE PER IL LAVORO IN VERTICALE:

LA MASSIMA ALTEZZA DI LAVORO AMMESSA NELLA CONFIGURAZIONE A 4 TIRI E' DI 21 m (LIMITE LUNGHEZZA FUNE)

CAUTION

Operating conditions for crane work in vertical position:

The maximum work height allowed in the configuration with 4 falls of rope head pulley is 21 m (Rope length limit)



XE 395 A